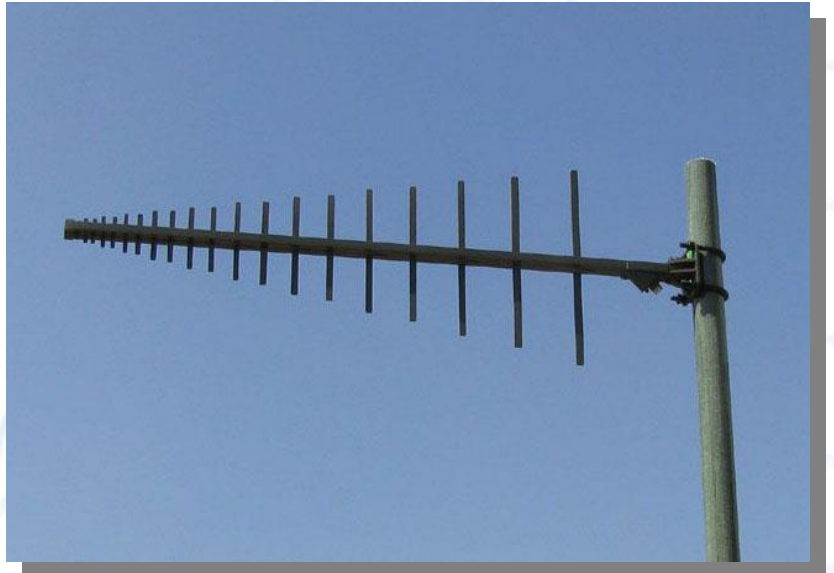


500-3000MHz Log Periodic Dipole Array

The RLP500-3000 Log Periodic Dipole Array is a directional antenna operating in the frequency range 500-3000MHz, designed for general purpose communications, spectrum monitoring and frequency jamming applications.

Constructed from aluminium and stainless steel, with an epoxy paint finish, the RLP500-3000 is lightweight and durable, ensuring many years of trouble free, high performance service.

Supplied completely assembled, the mounting bracket assembly allows for mounting in horizontal or vertical polarization mode.



Specifications

Frequency Range
Forward Gain

500-3000MHz
8-9dBi

Input Impedance
V.S.W.R.
Input Power
Input Connector

50 Ω Nominal
<2.5:1
250W
N female

Boom Length x Width
Number Elements
Weight

0.96 Meters x 0.3 Meters
20
1.2Kg

Polarization
E-plane 3dB Beamwidth
H-plane 3dB Beamwidth

Linear (Vertical or Horizontal)
Approx. 60 Deg.
Approx. 80 Deg.

Environmental

Designed to comply with MIL-STD-810F